



# KLERKSCALE<sup>(PTY) LTD</sup>

## INDUSTRIAL WEIGHING EQUIPMENT

### KSC-SBT

SHEAR BEAM NICKEL-PLATED LOAD  
CELLS: FROM 500kg TO 2000kg



HEAD OFFICE:  
DIRECTORS:  
REGISTRATION NO:  
VAT:  
ADDRESS:

KLERKSCALE KLERKSDORP (PTY) LTD  
R.W. STEPHENSON, T. STEPHENSON  
91/000038/07  
4560107015  
37 CHROMIUM RD, URANIAVILLE,  
KLERKSDORP, 2571

Dini Argeo nickel-plated approved load cells. The measures are compatible with the main shear beam load cells present on the market. They are suitable for creating CE-M approved scales with 4 load cells or for weighing conveyors, tanks and hoppers, thanks to their accessories.

Capacities (kg): 500, 1000, 2000,  
OIML R60 approved, NTEP  
Nickel-plated steel. IP67 protection  
Output Resistance 350 Ohm

## **MAIN FEATURES**

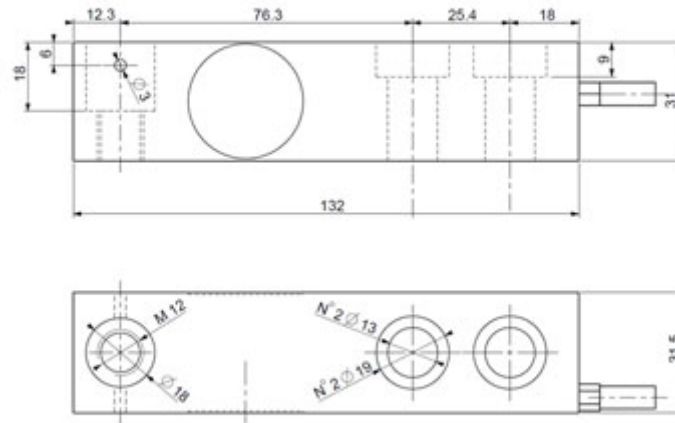
- C3 precision class
- Nickel-plated construction
- Potted seal, IP67 protection
- Max. capacities from 500 to 2000 kg
- Shielded connection cable
- Test certificate available upon request

## **TECHNICAL FEATURES**

- Minimum load cell verification interval  $V_{min} = E_{Max} / 10.000$
- Maximum number of verification intervals  $n_{LC} = 3000$
- Combined error 0,017% of Full Scale Output (F.S.)
- Nonlinearity  $\pm 0.02\%$  FS
- Hysteresis  $\pm 0.02\%$  FS
- Repeatability  $\pm 0.01\%$  FS
- Full Scale Output  $2mV/V \pm 0.5\%$
- Zero balance  $\pm 1\%$  FS
- Compensated Temperature Range  $-10^{\circ}C/+50^{\circ}C$ .
- Operating Temperature Range  $-20^{\circ}C/+60^{\circ}C$ .
- Creep error after 30 minutes  $<0,02\%$  F.S.
- Maximum tolerated excitation voltage 15 Vdc
- Input Resistance  $380 \pm 20$  Ohm
- Output Resistance  $350 \pm 5$  Ohm
- Insulation Resistance  $>5000$  MOhm
- Safe Overload 120% F.S.
- Ultimate Overload 300% F.S.
- 6-wire shielded cable, 3.5m long, 5 mm diameter

## DIMENSIONS - DECODING STANDARD CABLE

- NOTE: dimensions in mm



- Decoding of the standard cable colours

Colour	Function
—	SHIELD
YELLOW	OUTPUT +
GREY	SENSE +
BROWN	INPUT +
WHITE	OUTPUT +
GREEN	INTPUT -
PINK	SENSE -